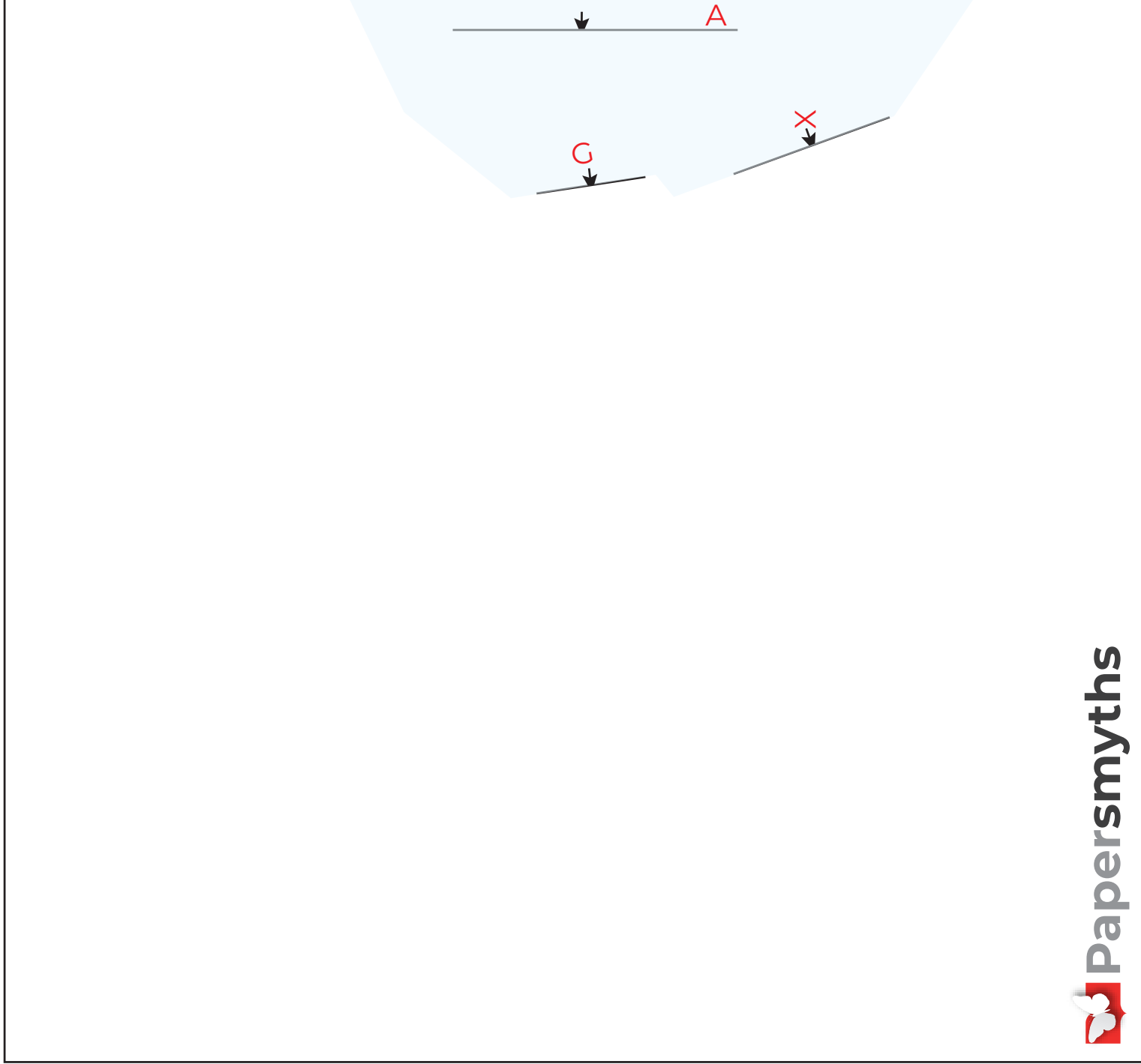
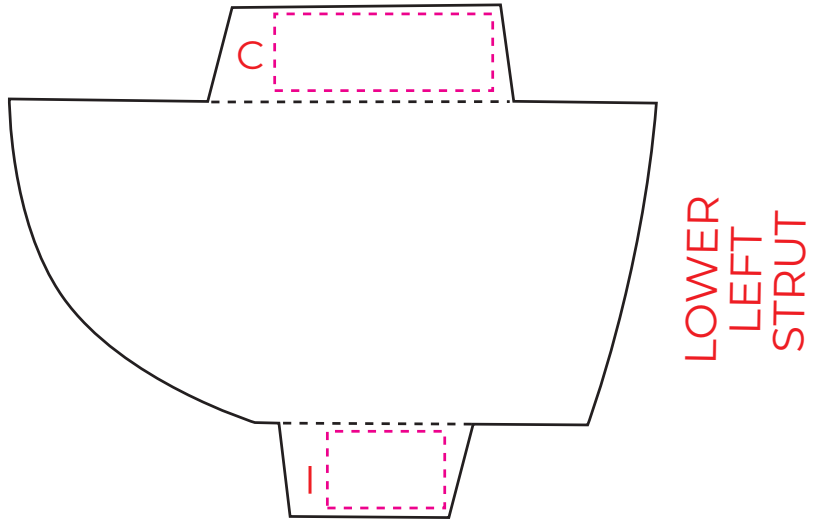


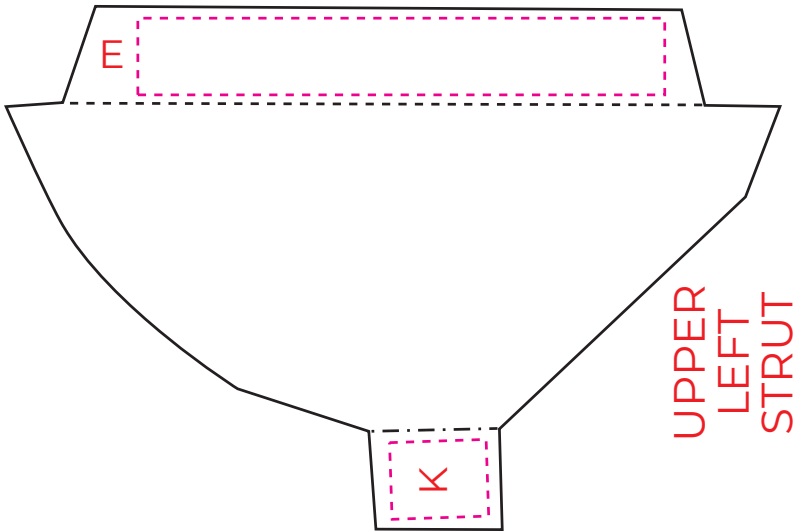
THE RIGHT PAGE



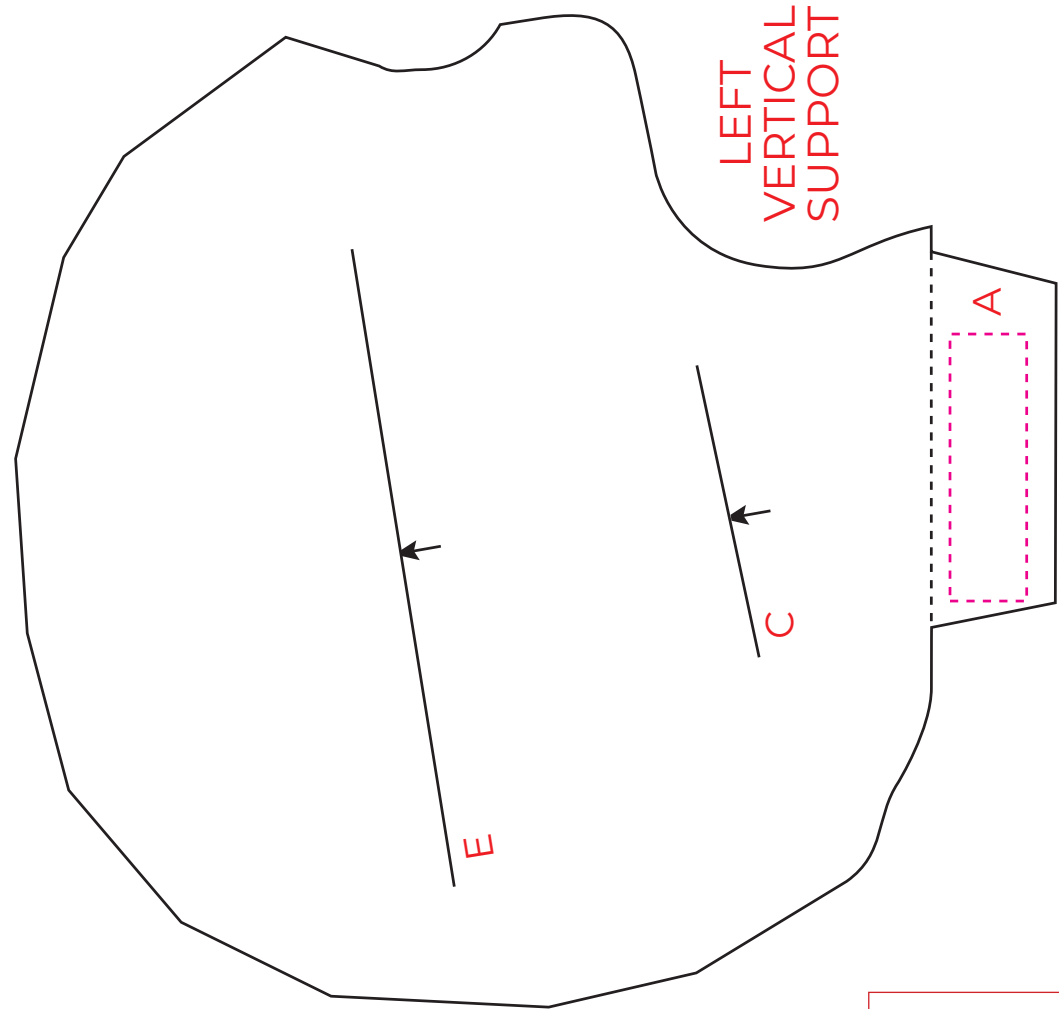
THE LEFT PAGE



LOWER
LEFT
STRUT

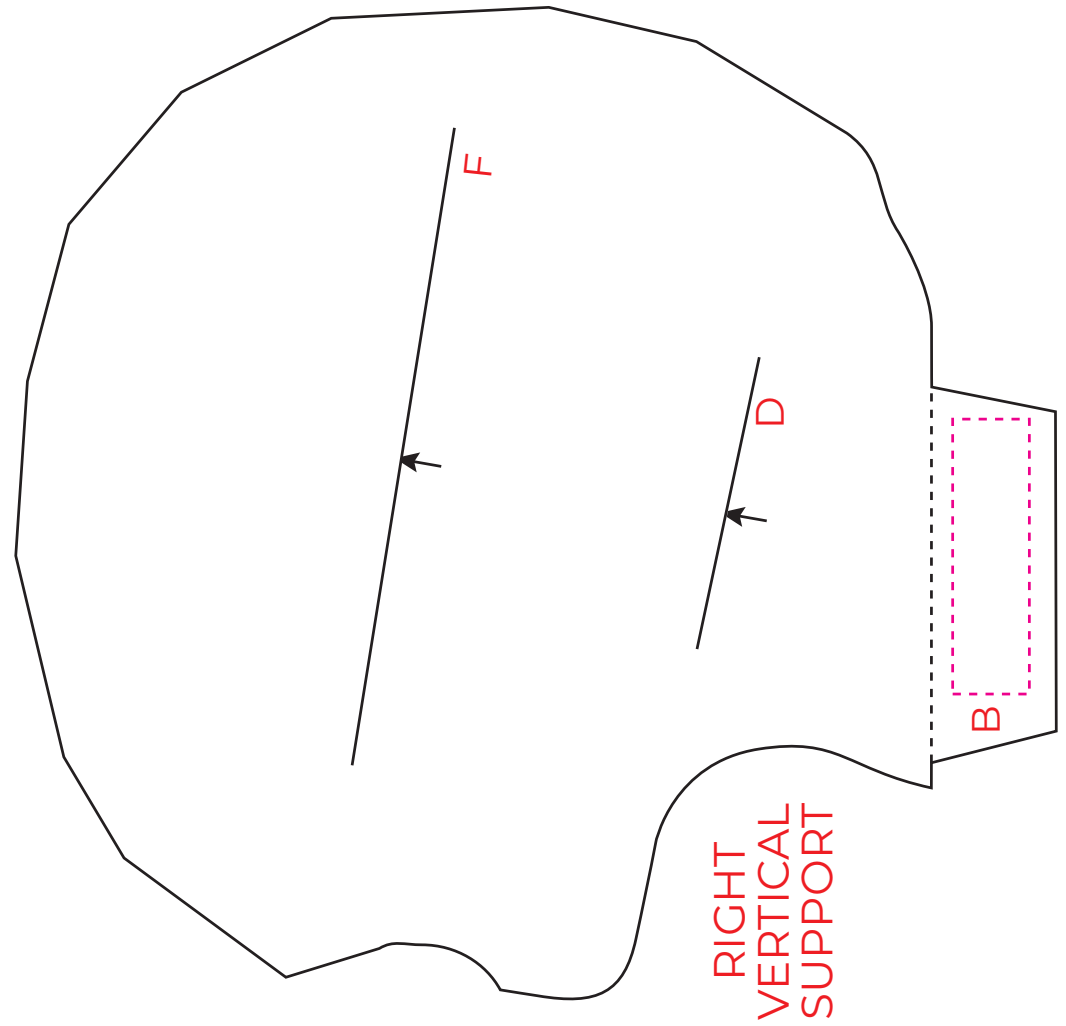
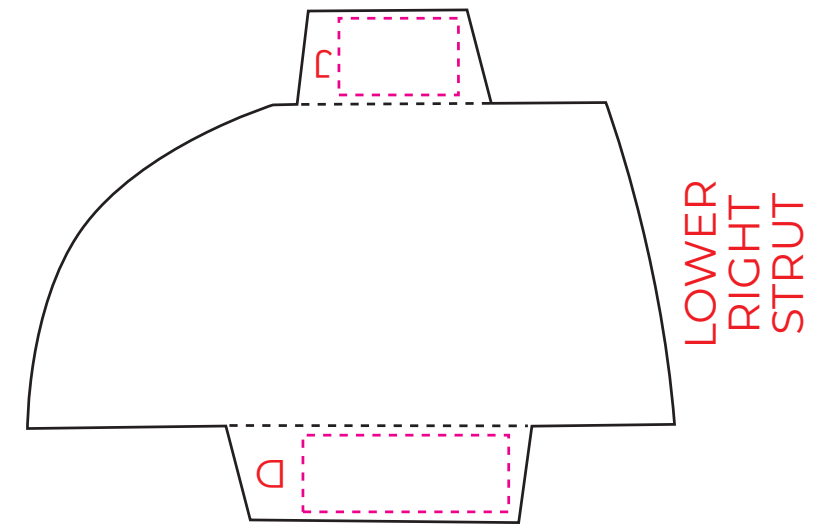
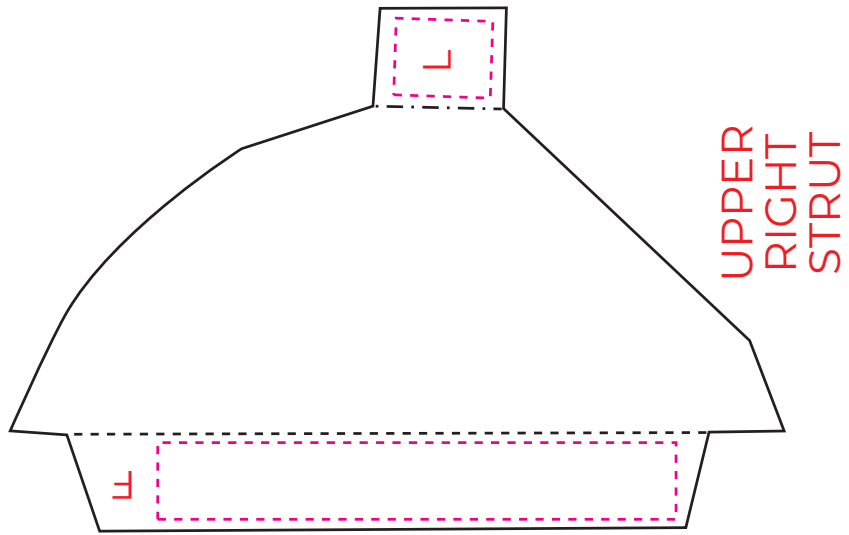


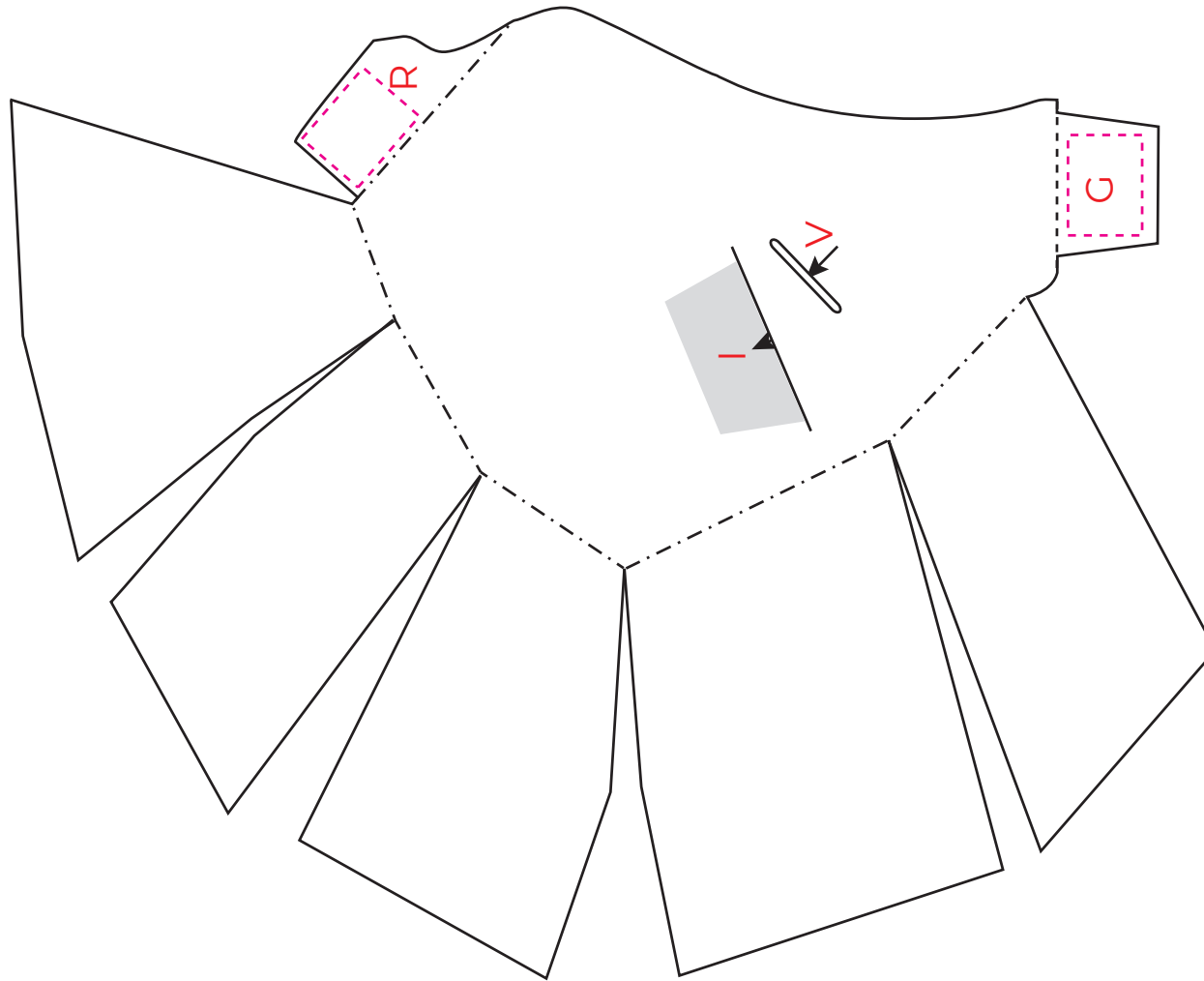
UPPER
LEFT
STRUT



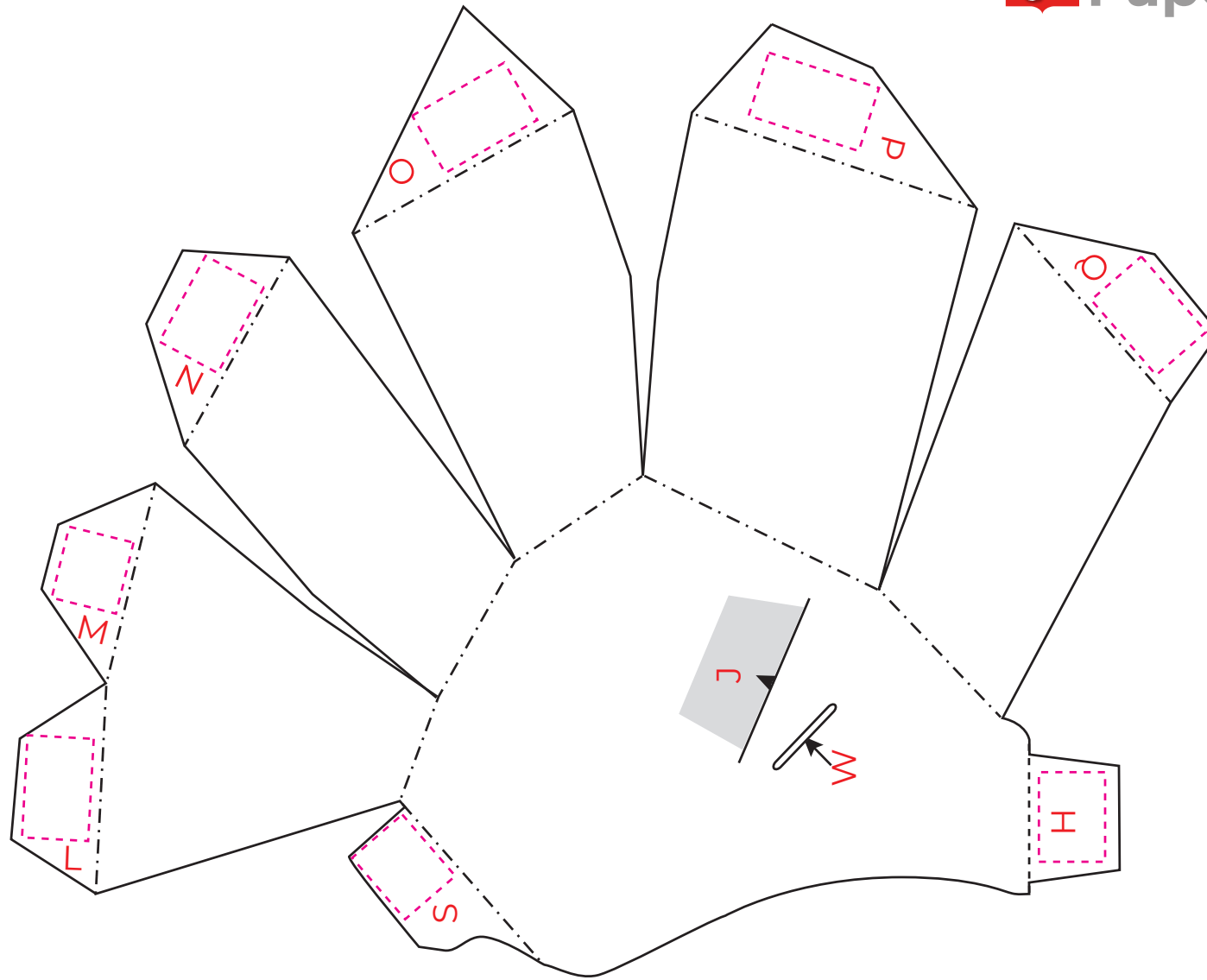
LEFT
VERTICAL
SUPPORT

Tip: Score crease marks with a ruler and blunt point to make folding easier

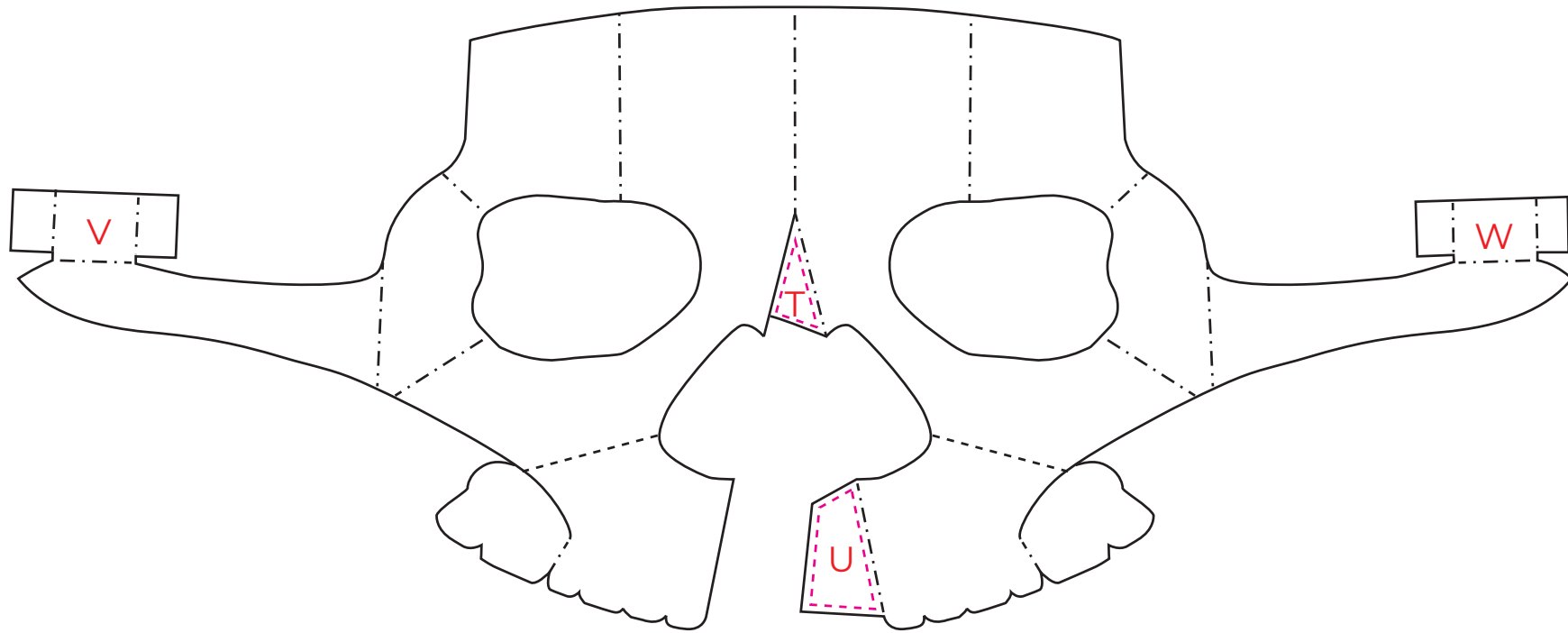




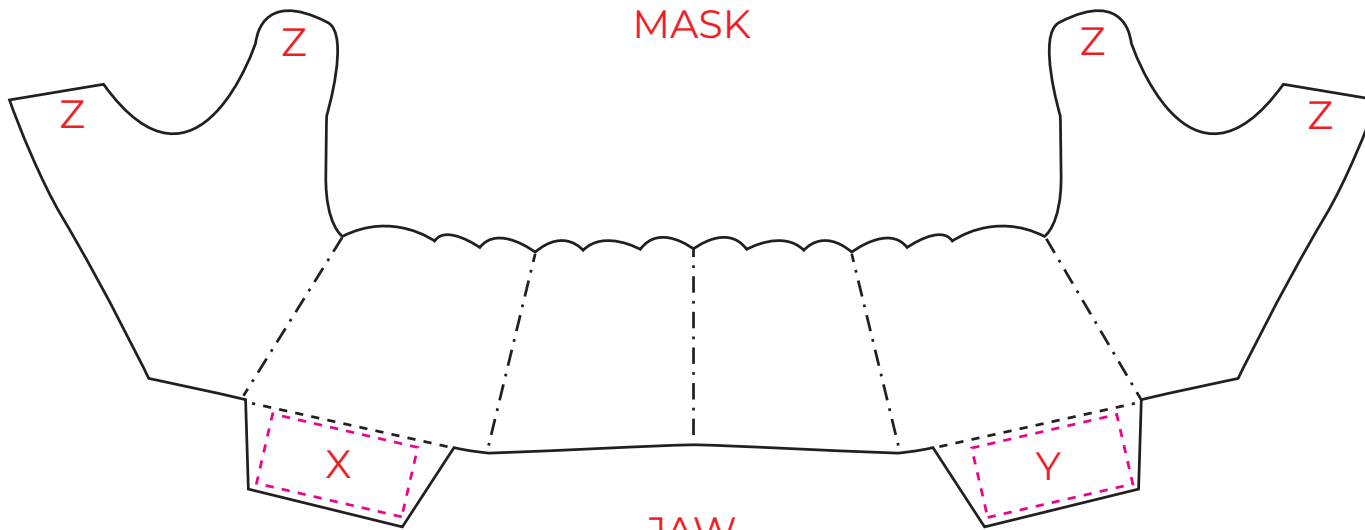
LEFT CRANIUM



RIGHT CRANIUM



MASK



JAW